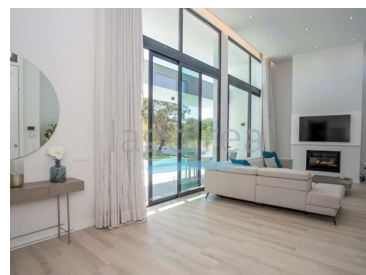




Loulé (São Clemente) - Villa



3 Bedrooms
 2 Bathrooms
 247 Area (m²)
 678 Land Area (m²)

1 195 000 €
(EUR €)

Modern 3 bedroom villa walking distance from Loule city centre

Situated in a perfect location, within easy walking distance of the shops, restaurants and facilities of the thriving town of Loule, however being on the end plot of the road, with non-buildable land to the side, you feel nature and peace are at your doorstep.

This villa has a minimal, modern architectural design, featuring a double height ceiling with high windows in the living room, allowing light to flood the room. The 3 bedrooms are all in a separate wing, giving the house a pleasing L shape.

The garden has little maintenance required, with a pretty Olive tree at its centre, if you look to the south, in the distance the Ocean is the backdrop to your home. The roof has a terrace that is pre-plumbed for a jacuzzi, the perfect place to watch the sun go down.

T +351 925 422 789 ² · E info@lagoreal.com
Buganvilha Plaza, Loja nº 3, 8135-024 Quinta do Lago, Almancil, Portugal
AMI 17528

¹ (Call to national fixed network) | ² (Call to national mobile network)



Property Features

- Double glazing
- Walking distance to amenities
- Quiet Location
- Open plan living area
- Kitchen
- Energetic certification: B-

T +351 925 422 789 ² · E info@lagoreal.com
Buganvilia Plaza, Loja nº 3, 8135-024 Quinta do Lago, Almancil, Portugal
AMI 17528

¹ (Call to national fixed network) | ² (Call to national mobile network)